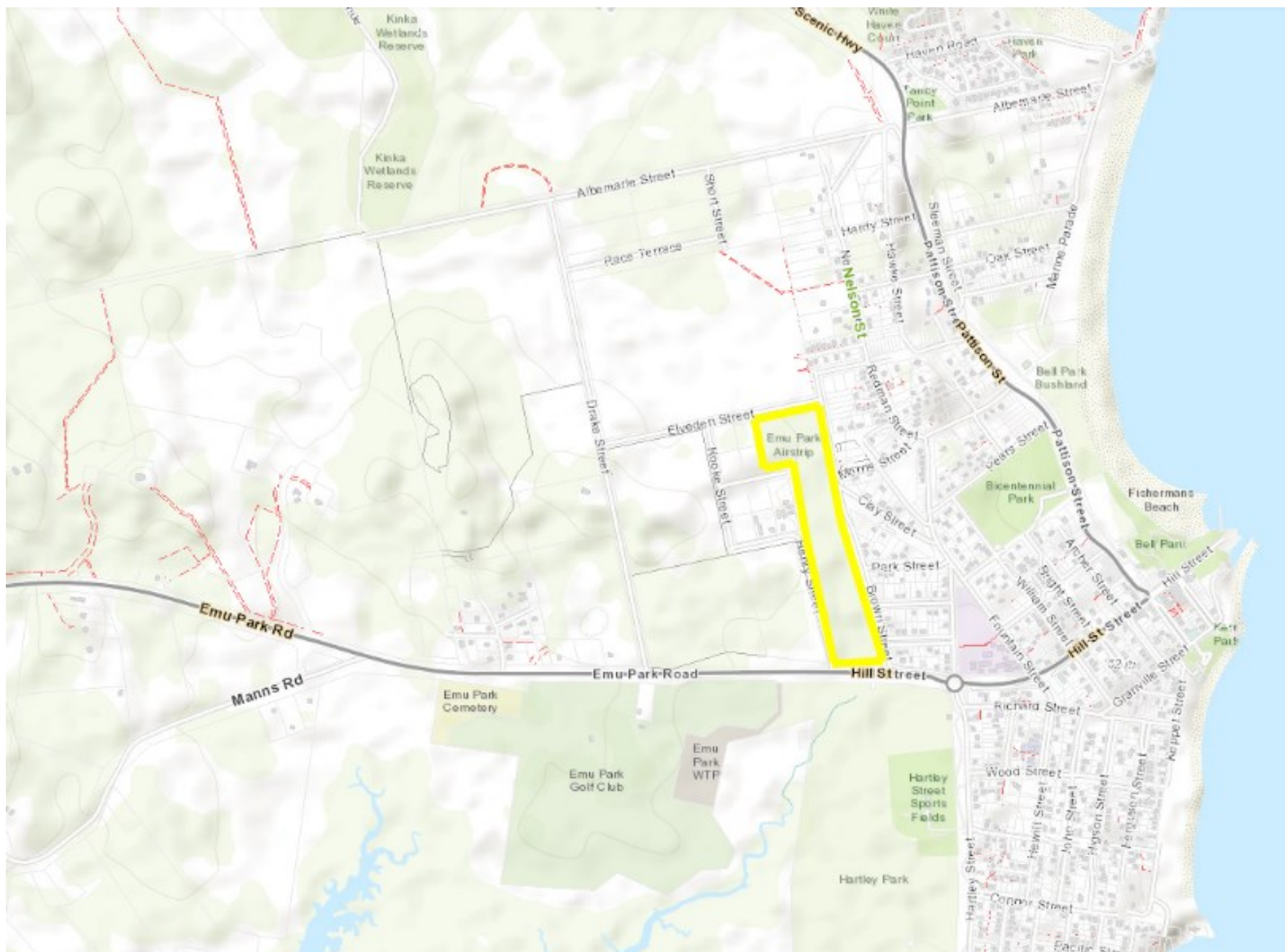


## MAPS







## HISTORY

The Northern part of what is now the airstrip was historically part of a Reserve for Defence Purposes – the rest of that former reserve is now privately owned (in red is privately owned former defence reserve, in blue the section of the airfield that was formerly part of the defence reserve). Orange is the airstrip site today.

The airstrip property is State-owned and managed by Council as trustee. The site comprises 17.41 hectares and was gazetted to Council as trustee on 8 October 1966.



## LIMITATIONS

The airstrip is dedicated as a 'Reserve for Landing Ground for Aircraft'. Rather than being a community purpose reserve, it is an operational reserve.

The *Land Act 1994* enables unallocated state land to be dedicated as trust land for community purposes. Future land cannot be dedicated as a Reserve for Landing Ground for Aircraft as it is no longer listed as a community purpose reserve in the *Land Act 1994*.

Reserves are set aside for a dedicated purpose of the reserve and generally cannot be used for commercial reasons.

The airstrip, outlined in orange, adjoining parcels to the airstrip are privately owned (blue).

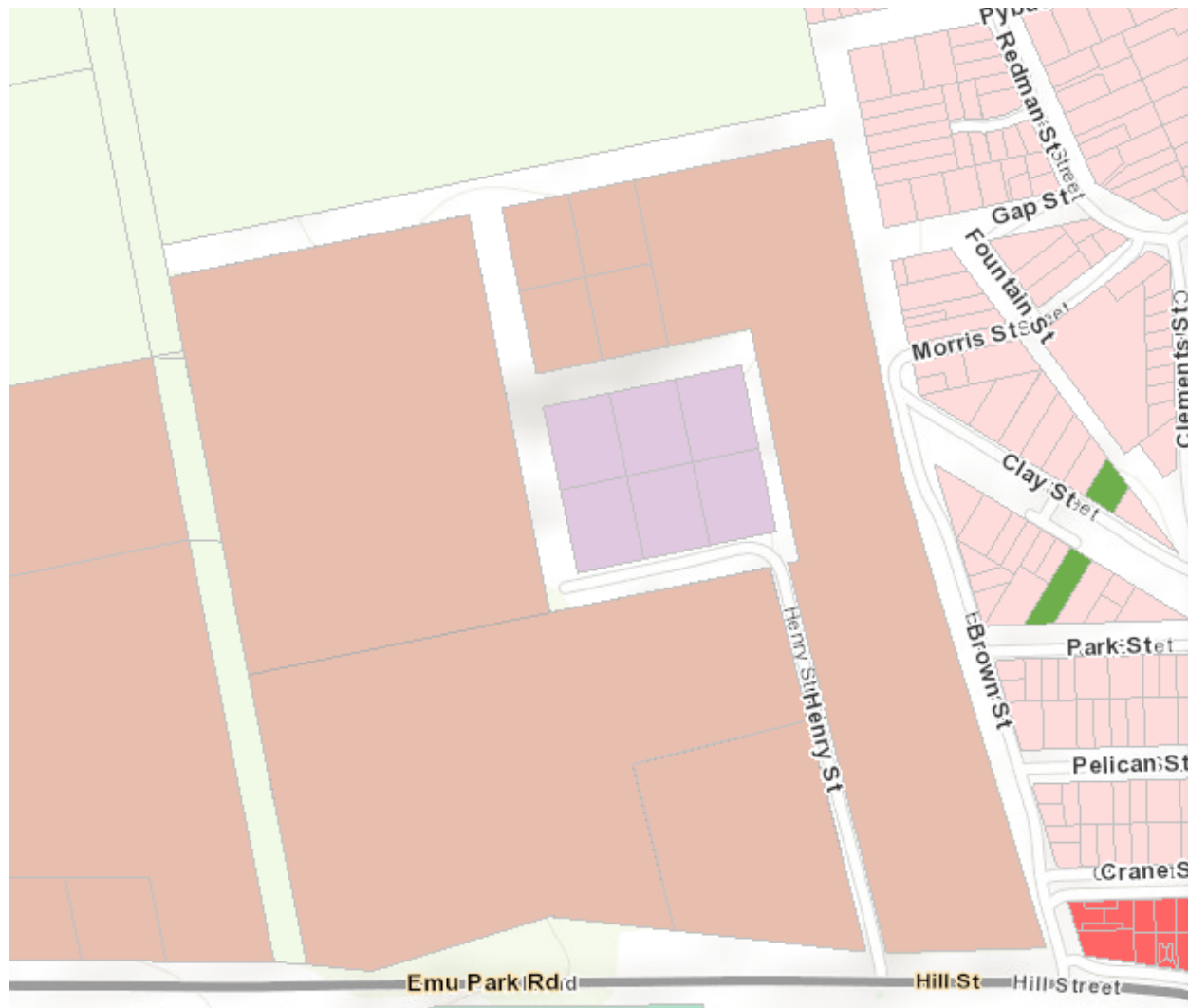
The land tenure of the parcels in green are a deed of grant, being freehold land owned by Livingstone Shire Council.

It is likely that private parcels of land are to be developed.



## ZONING

The airstrip is zoned [Emerging Community](#).



### Adopted Zones

-  L2 - Neighbourhood centre
-  L2 - Local centre
-  L2 - Major centre
-  L1 - Environmental management and conservation
-  L2 - Low impact industry
-  L2 - Medium impact industry
-  L1 - Community facilities
-  L1 - Emerging communities
-  L1 - Limited development (constrained le
-  L1 - Rural residential
-  L1 - Rural
-  L1 - Special purpose
-  L1 - Township
-  L2 - Specialised centre
-  L2 - Open space
-  L2 - Sport and recreation
-  L2 - Medium density residential
-  L2 - Low medium density residential
-  L2 - Low density residential
-  L1 - Major Tourism